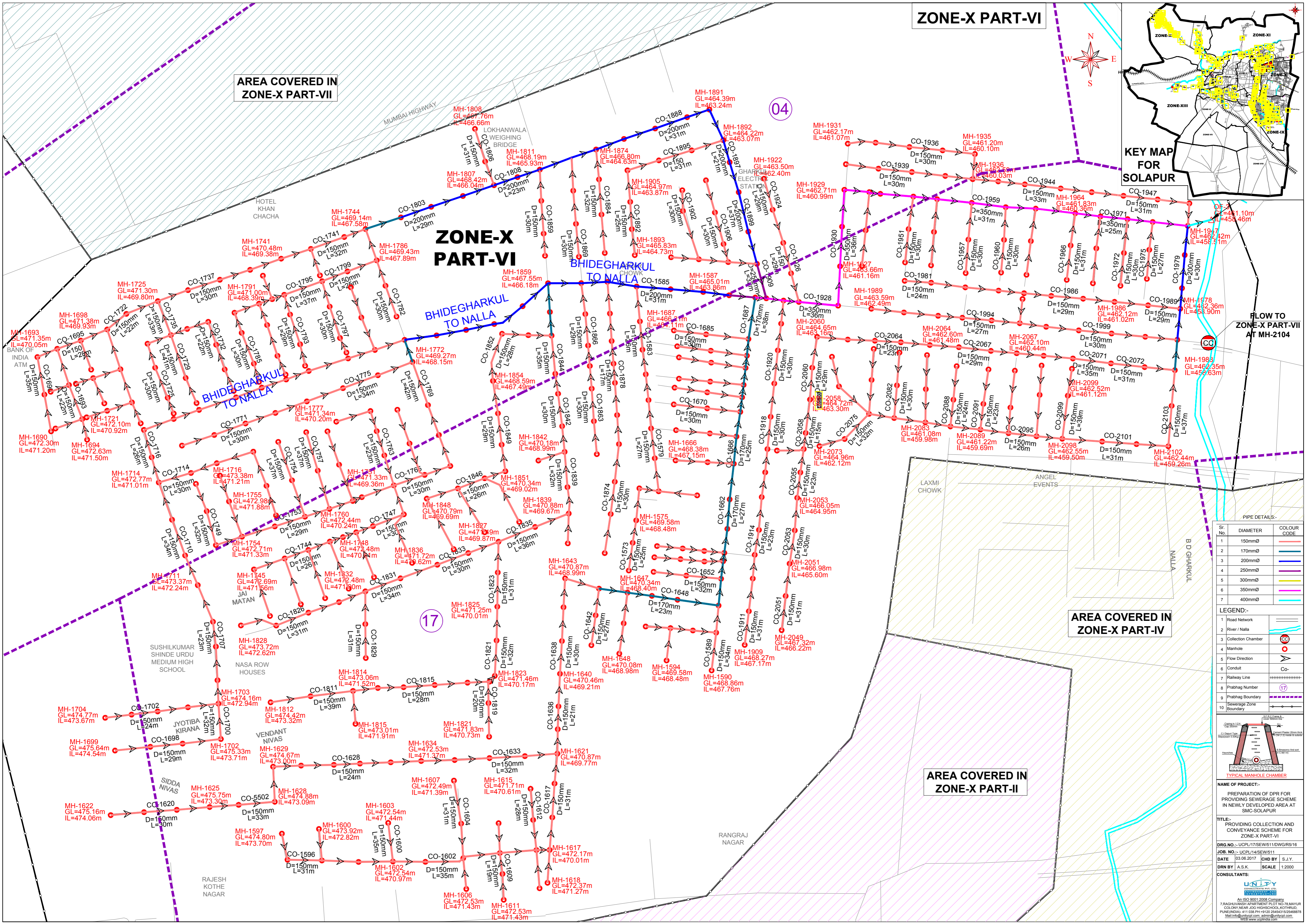


**ZONE-X PART-VI**

**AREA COVERED IN ZONE-X PART-VII**



**ZONE-X PART-VI**

**AREA COVERED IN ZONE-X PART-IV**

**AREA COVERED IN ZONE-X PART-II**

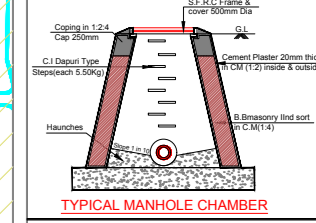
**FLOW TO ZONE-X PART-VII AT MH-2104**

PIPE DETAILS:-

Sr. No.	DIAMETER	COLOUR CODE
1	150mmØ	Red
2	170mmØ	Orange
3	200mmØ	Yellow
4	250mmØ	Green
5	300mmØ	Blue
6	350mmØ	Purple
7	400mmØ	Cyan

LEGEND:-

1	Road Network	—
2	River / Nalla	—
3	Collection Chamber	CC
4	Manhole	MH
5	Flow Direction	→
6	Conduit	Co-
7	Railway Line	
8	Prabhad Boundary	17
9	Prabhad Boundary	—
10	Sewerage Zone Boundary	—



NAME OF PROJECT:-  
 PREPARATION OF DPR FOR PROVIDING SEWERAGE SCHEME IN NEWLY DEVELOPED AREA AT SMC-SOLAPUR

TITLE:-  
 PROVIDING COLLECTION AND CONVEYANCE SCHEME FOR ZONE-X PART-VI

DRG. NO.:- UCPL/14/SEW/511/DWGR/5/16  
 JOB. NO.:- UCPL/14/SEW/511  
 DATE: 03.06.2017 CHD BY: S.J.Y.  
 DRN BY: A.S.K. SCALE: 1:2000

CONSULTANTS:

An ISO 9001:2008 Company  
 7, BACHANWAR APARTMENT PLOT NO-18, MANWAR COLONY, NEAR GOV. HIGHER SECONDARY SCHOOL, KOTHRUD, PUNE (INDIA) - 411 008. PH: +91 20 25454315/2548879. Mail: info@unipy.com, admin@unipy.com, www.unipy.com