

# ZONE-IX PART-V

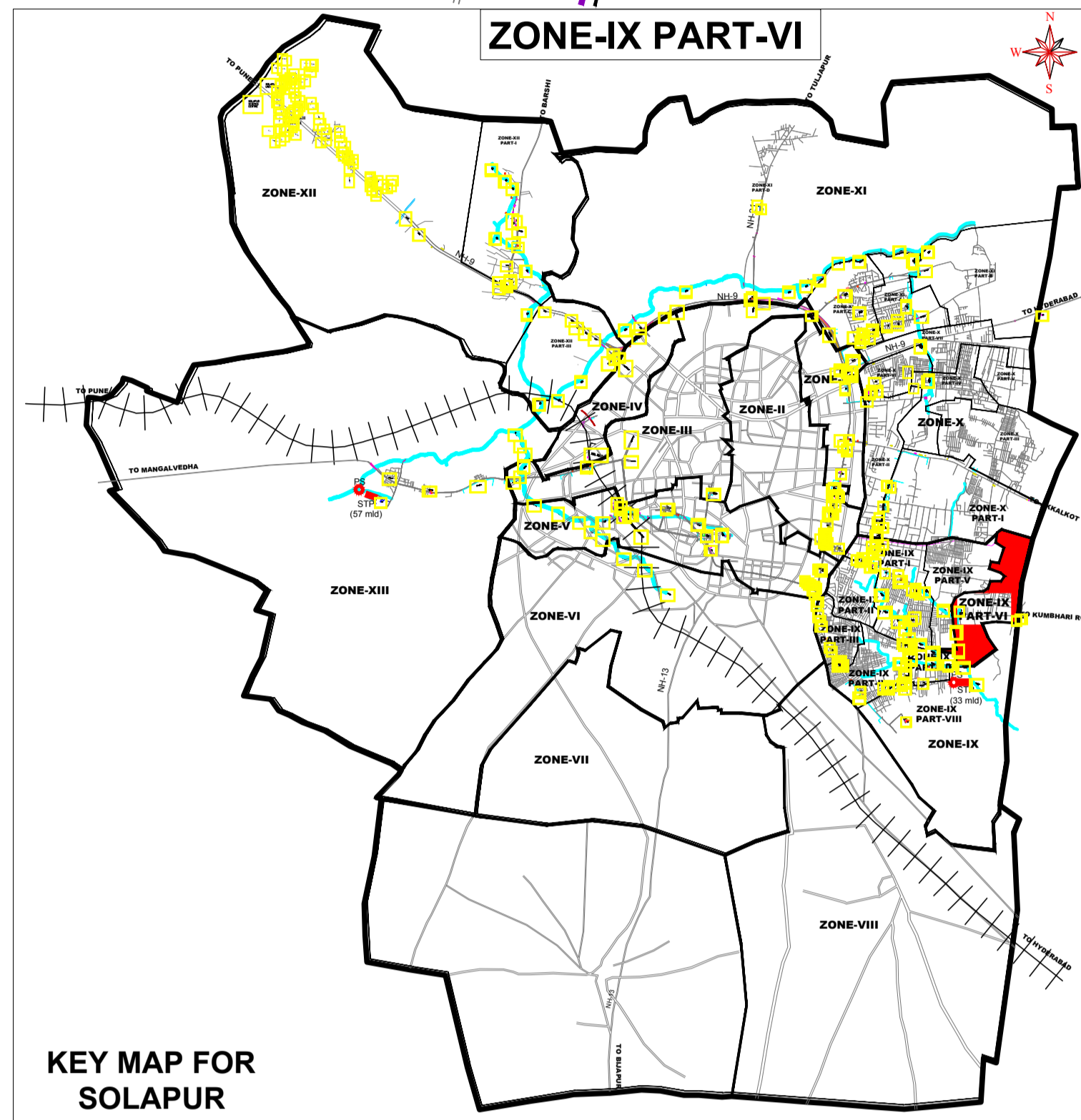
AREA COVERED IN ZONE-IX PART-V

AREA COVERED IN ZONE-IX PART-V

# ZONE-IX PART-VI

AREA COVERED IN ZONE-IX PART-VIII

AREA COVERED IN ZONE-IX PART-VIII



Sl. No.	DIAMETER	COLOR CODE
1	147mm	Red
2	200mm	Blue
3	217mm	Green
4	300mm	Yellow
5	350mm	Purple
6	400mm	Cyan
7	450mm	Magenta
8	500mm	Black
9	600mm	Red
10	700mm	Blue

**LEGEND:-**

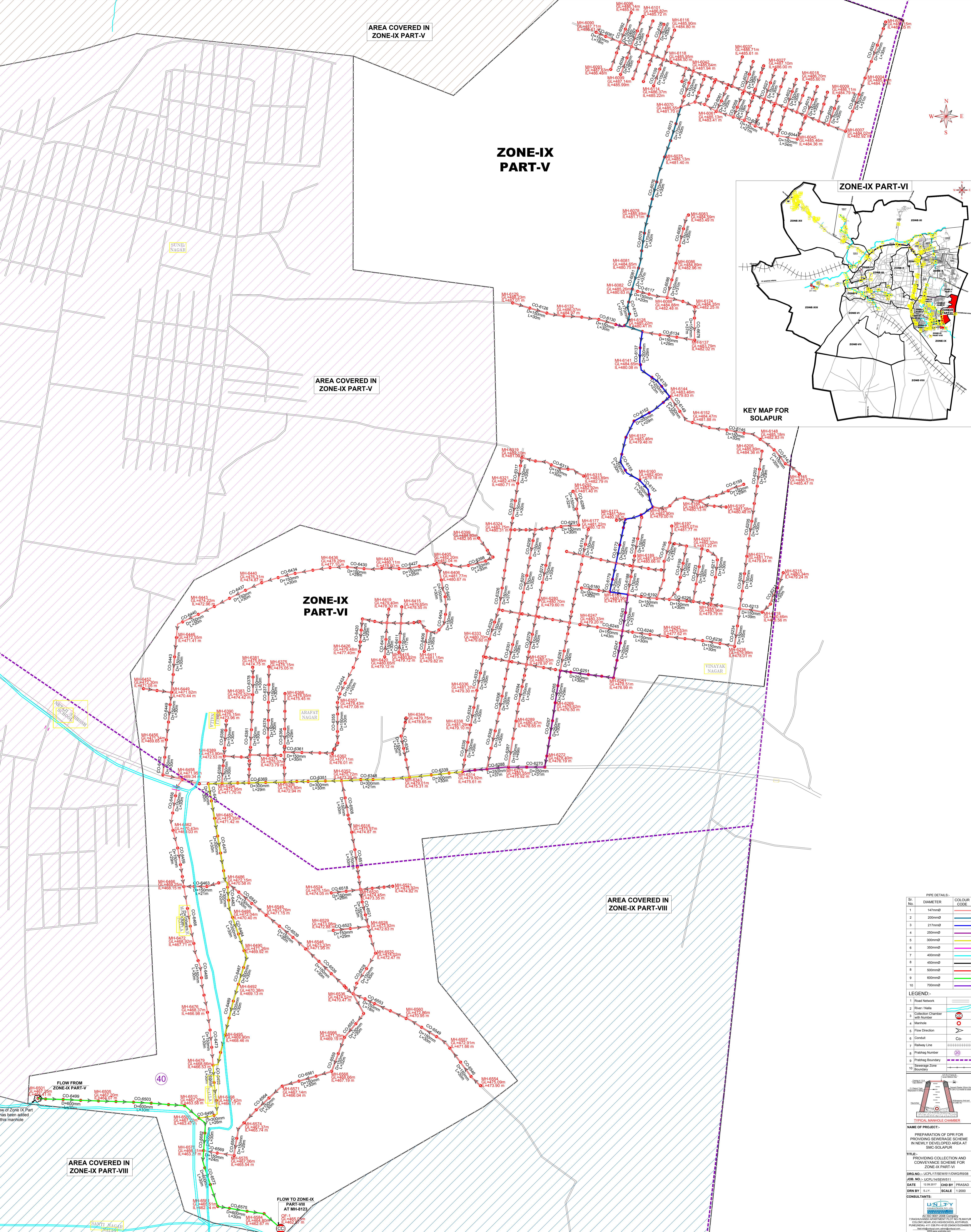
- 1 Road Network
- 2 River/Canals
- 3 Collection Chamber with Number
- 4 Manhole
- 5 Flow Direction
- 6 Const.
- 7 Railway Line
- 8 Prashag Number
- 9 Prashag Boundary
- 10 Sewerage Zone Boundary

**NAME OF PROJECT:-**  
PREPARATION OF DPR FOR PROVIDING SEWERAGE SCHEME IN NEWLY DEVELOPED AREA AT SMC-SOLAPUR

**TITLE:-**  
PROVIDING COLLECTION AND CONVEYANCE SCHEME FOR ZONE-IX PART-VI

**DR. NO.:** UCP/14/SEW/08  
**DATE:** 12.09.2017 **CHD BY:** PRASAD  
**DRN BY:** S.V. **SCALE:** 1:2000

**CONSULTANTS:**  
UJEP  
At No. 3001, 2008, Chhatrapati Shivaji Maharaj Road, Solapur, Maharashtra, India.



low of Zone IX Part has been added this manhole

SUNIL NAGAR

VINAYAK NAGAR

ARAFAT NAGAR